

The Urgency for Accelerating Supply Chain Sustainability





Why is Supply Chain Sustainability **Urgent**

To Addressing the Impact and Inequities to Society, the Environment and Economic Resilience?

How Do Businesses Play a **Pivotal** **Role in Reversing Impact**

Through Innovation, Collaboration and Building the Future Workforce?



We Are in the Age of "Ages"

Age of ABUNDANCE



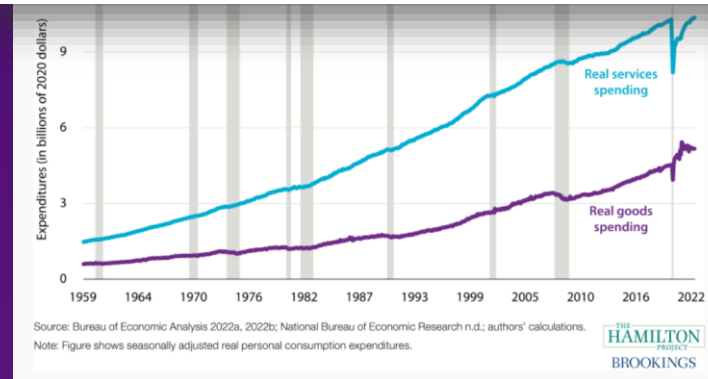
RETAIL

Holiday shoppers are going to blow the doors off this year | Consumer spending forecast

MasterCard Spending Pulse predicts robust holiday 2022



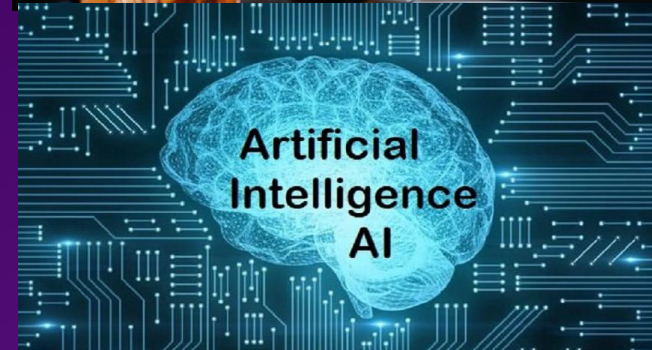
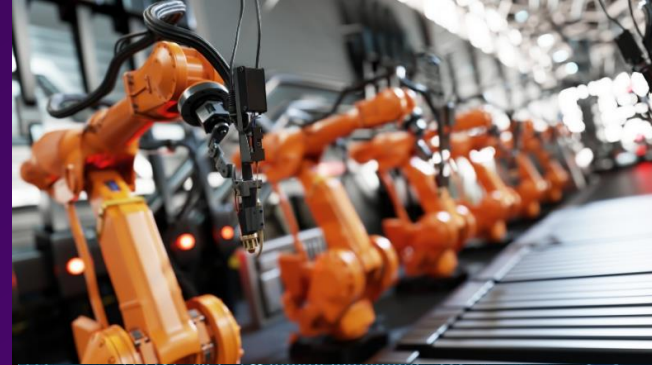
Jennifer Marks // Editor in Chief
September 13, 2022



We Are in the Age of "Ages"

Age of
ABUNDANCE

Age of
INNOVATION



We Are in the Age of "Ages"

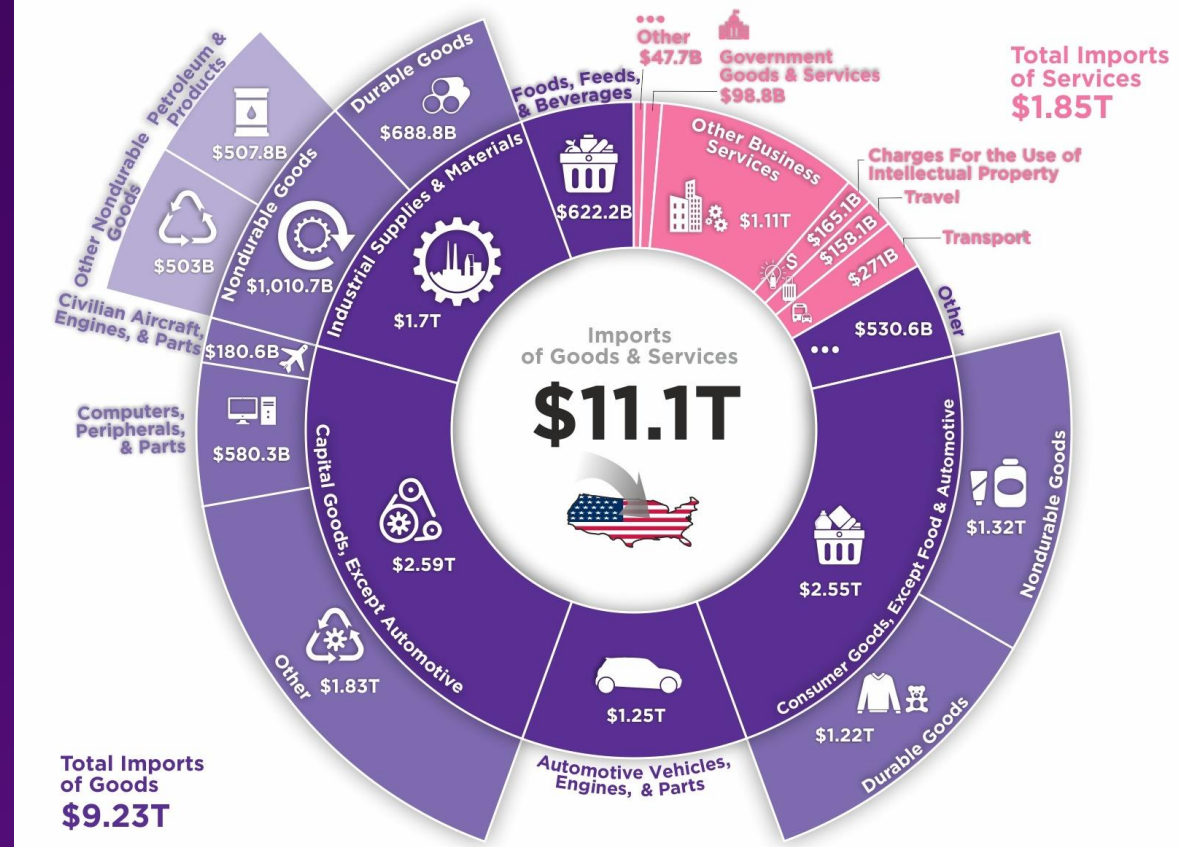
Age of
ABUNDANCE

Age of
INNOVATION

Age of
AVAILABILITY

Imports of Goods & Services by Type of Product

Total Value of the U.S. Imports in 2020



Article & Sources:
<https://howmuch.net/articles/us-exports-imports-of-goods-and-services-by-type-of-product>
Bureau of Economic Analysis - <https://www.bea.gov/>

Here's the Bad News



Growing Pressures

1

Supply network is scattered, complex and disconnected

2

World's natural and human resources are overused

3

Brands need full visibility / access into supply base

4

Buyers want more insights into product origins



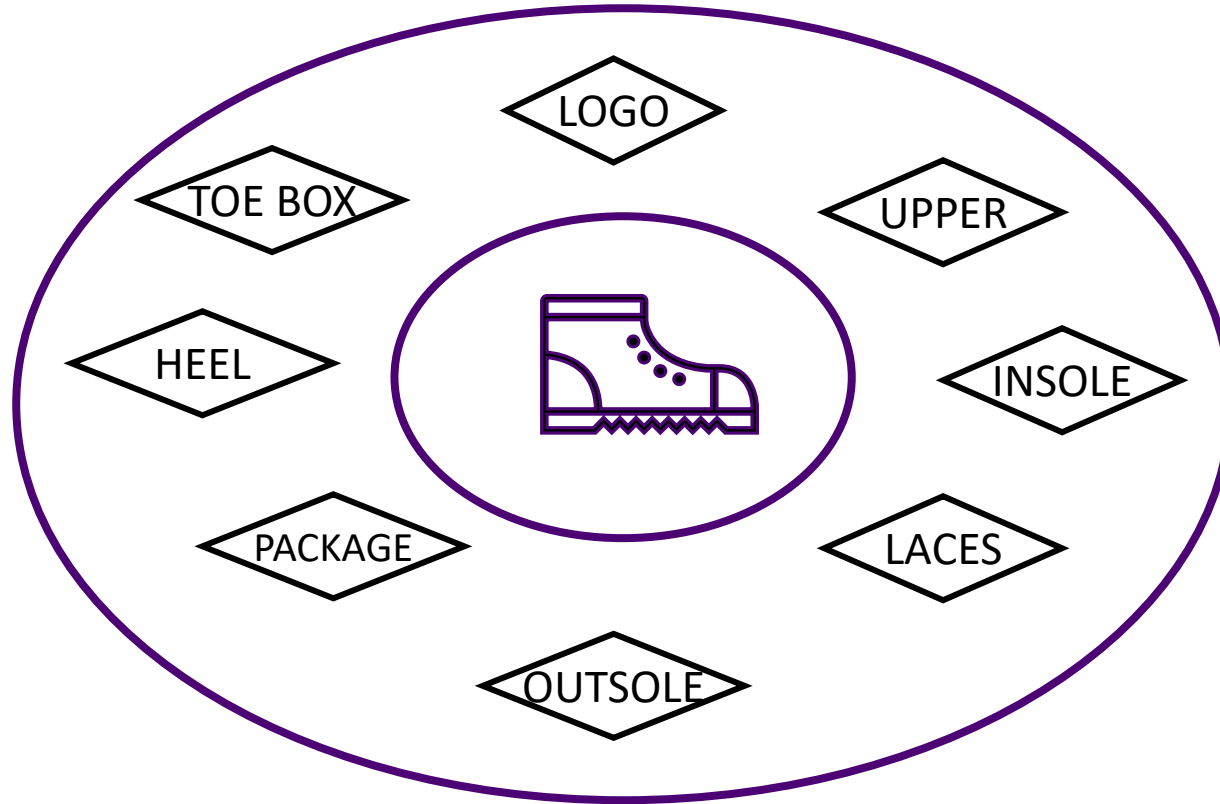
Let's Picture the Global Supply Network



**BRAND
Boot**

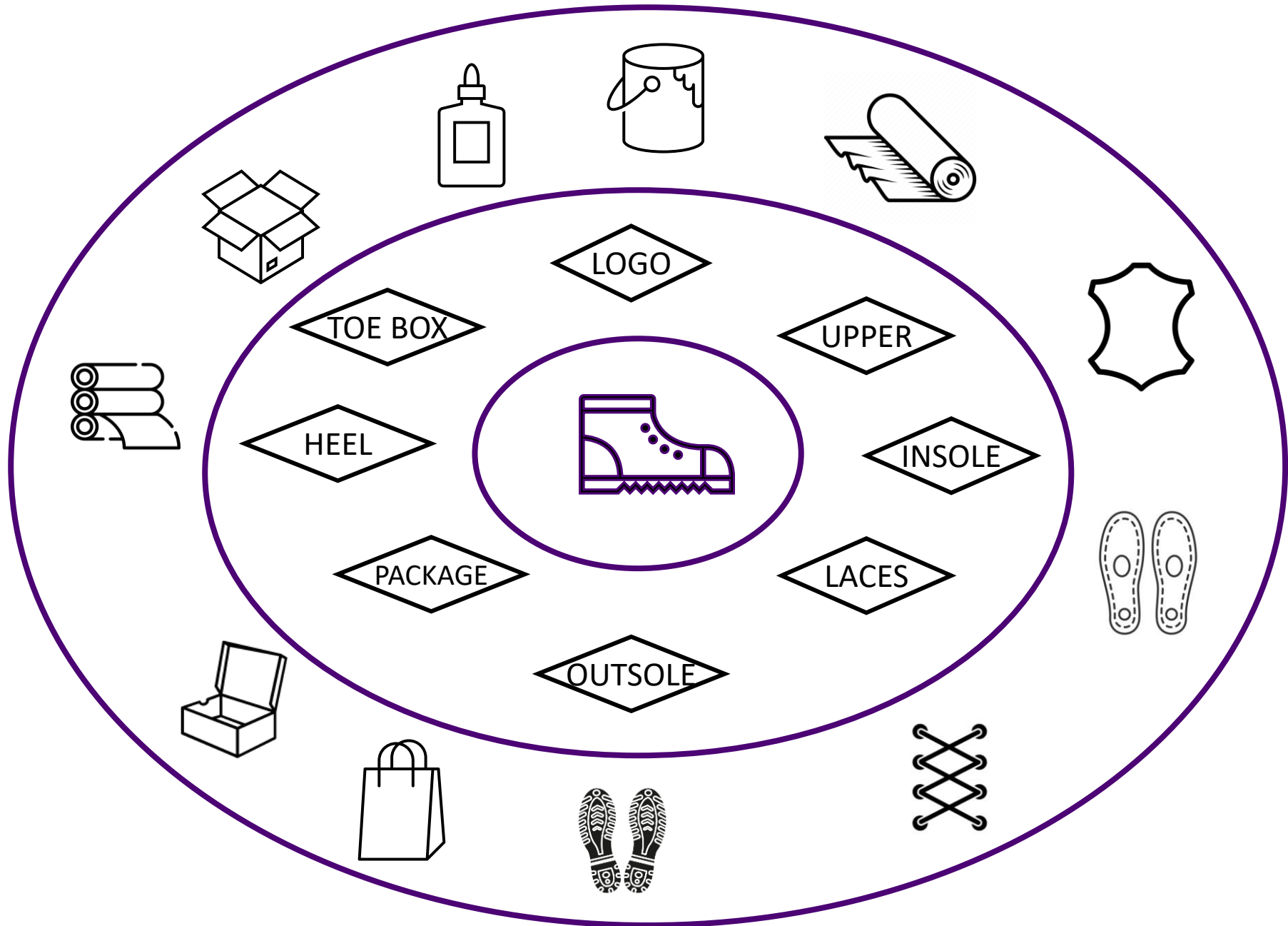


Let's Picture the Global Supply Network



Tier 1 Suppliers

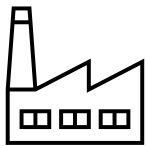
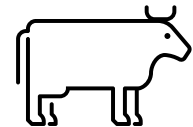
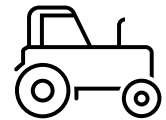
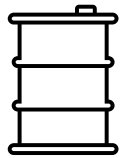
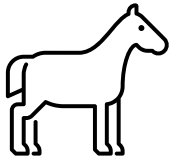
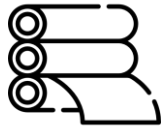
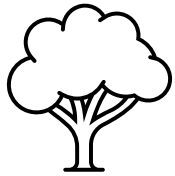
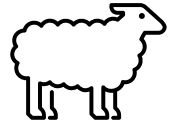
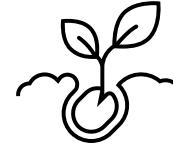
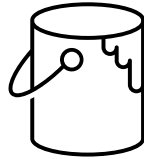
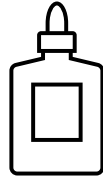
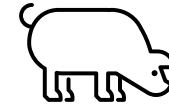
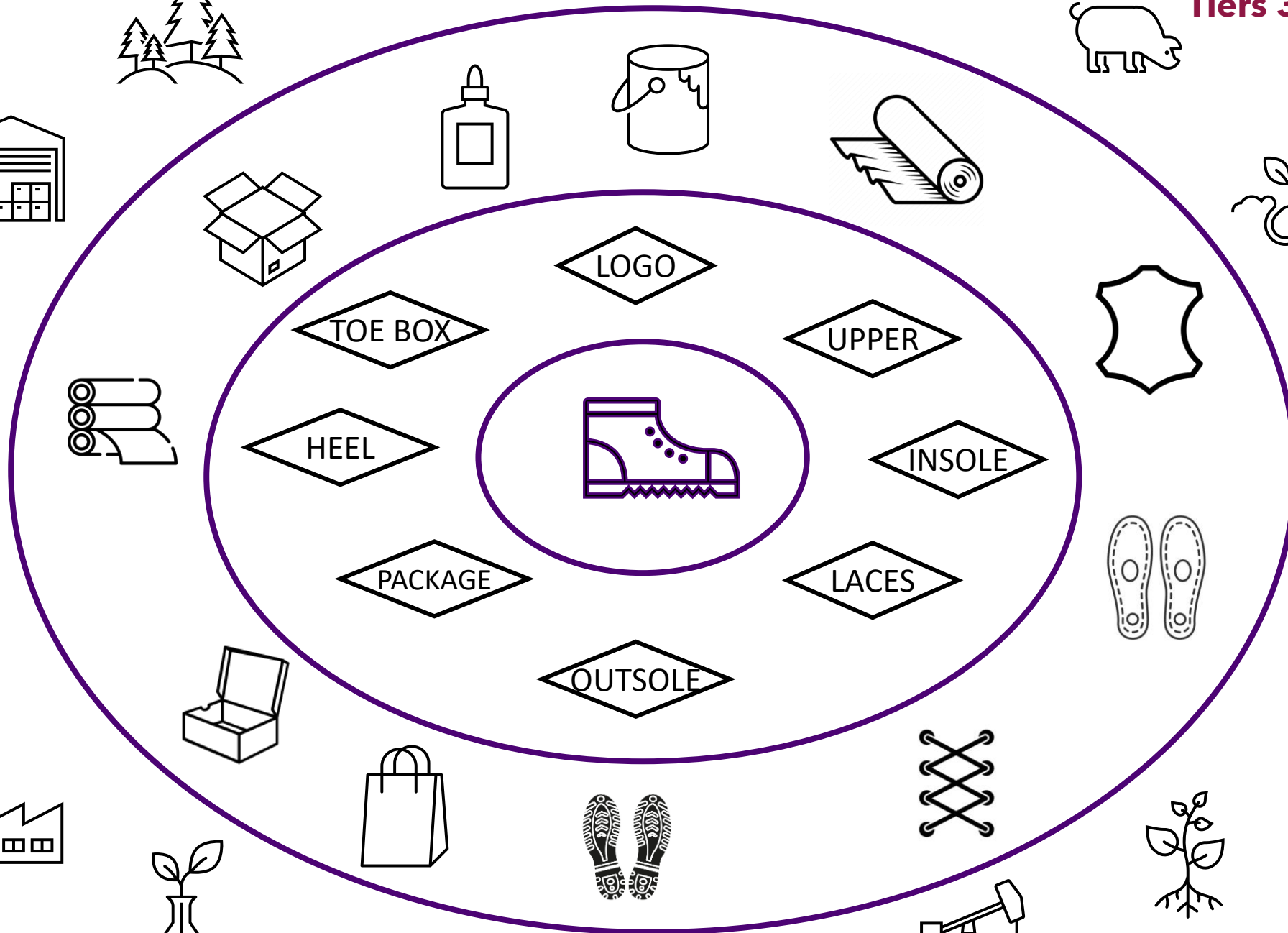




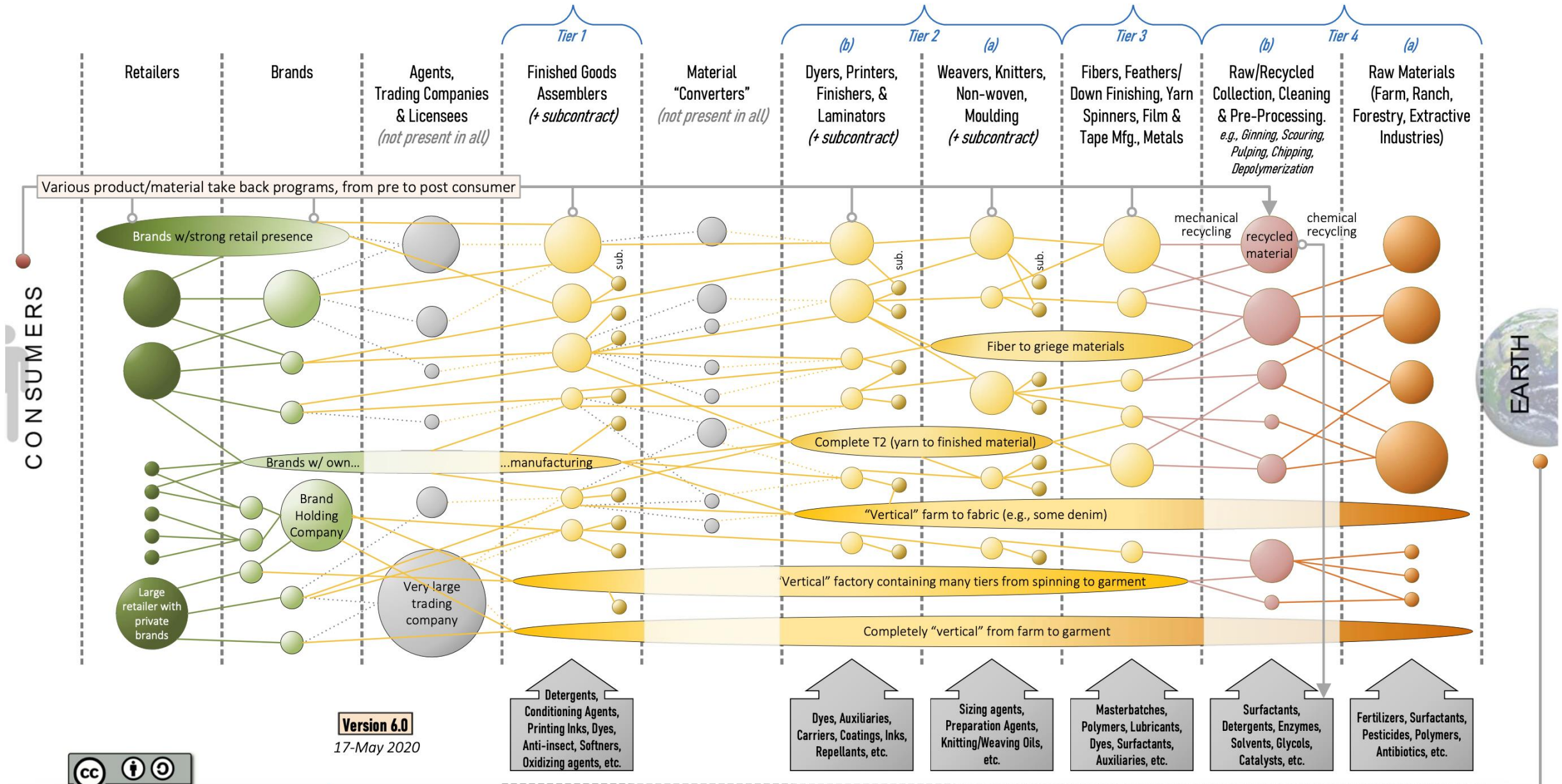
Tier 2 Suppliers



Tiers 3, 4 and 5 Suppliers



IT'S COMPLICATED....



CO₂

CH₄

N₂O

HFCs

PFCs

SF₆



Scope 2
INDIRECT

3438 tCO_{2e}

Scope 1
DIRECT

238 tCO_{2e}

Scope 3
INDIRECT

Scope 3
INDIRECT

33808 tCO_{2e}
purchased goods and services

purchased electricity, steam, heating & cooling for own use

leased assets

17829 tCO_{2e}
transportation and distribution

1961 tCO_{2e}
investments
franchises

38 tCO_{2e}
fuel and energy related activities

6020 tCO_{2e}
transportation and distribution

812 tCO_{2e}
waste generated in operations

employee commuting
business travel

1392 tCO_{2e}

company facilities

company vehicles

processing of sold products

use of sold products

end-of-life treatment of sold products

leased assets

Upstream activities

Reporting company

Downstream activities

Up to **90%** of an organization's environmental impact lies in the value chain.

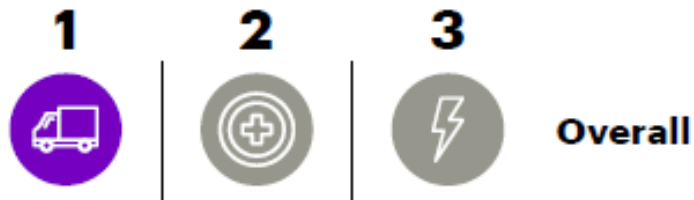


80 to 90% of greenhouse-gas emissions are “Scope 3”: indirect emissions that occur across the company's value chain.


McKinsey
& Company

Supply chain interruptions due to climate change pose the greatest risk

Top 3 Global Risks Identified



Key

-  Supply chain interruptions due to extreme weather events
-  Negative health impacts across the workforce
-  Operating challenges due to physical impacts on assets (e.g., heat waves, storm surges)



Climate change and environmental degradation could jeopardize the jobs of nearly

40%

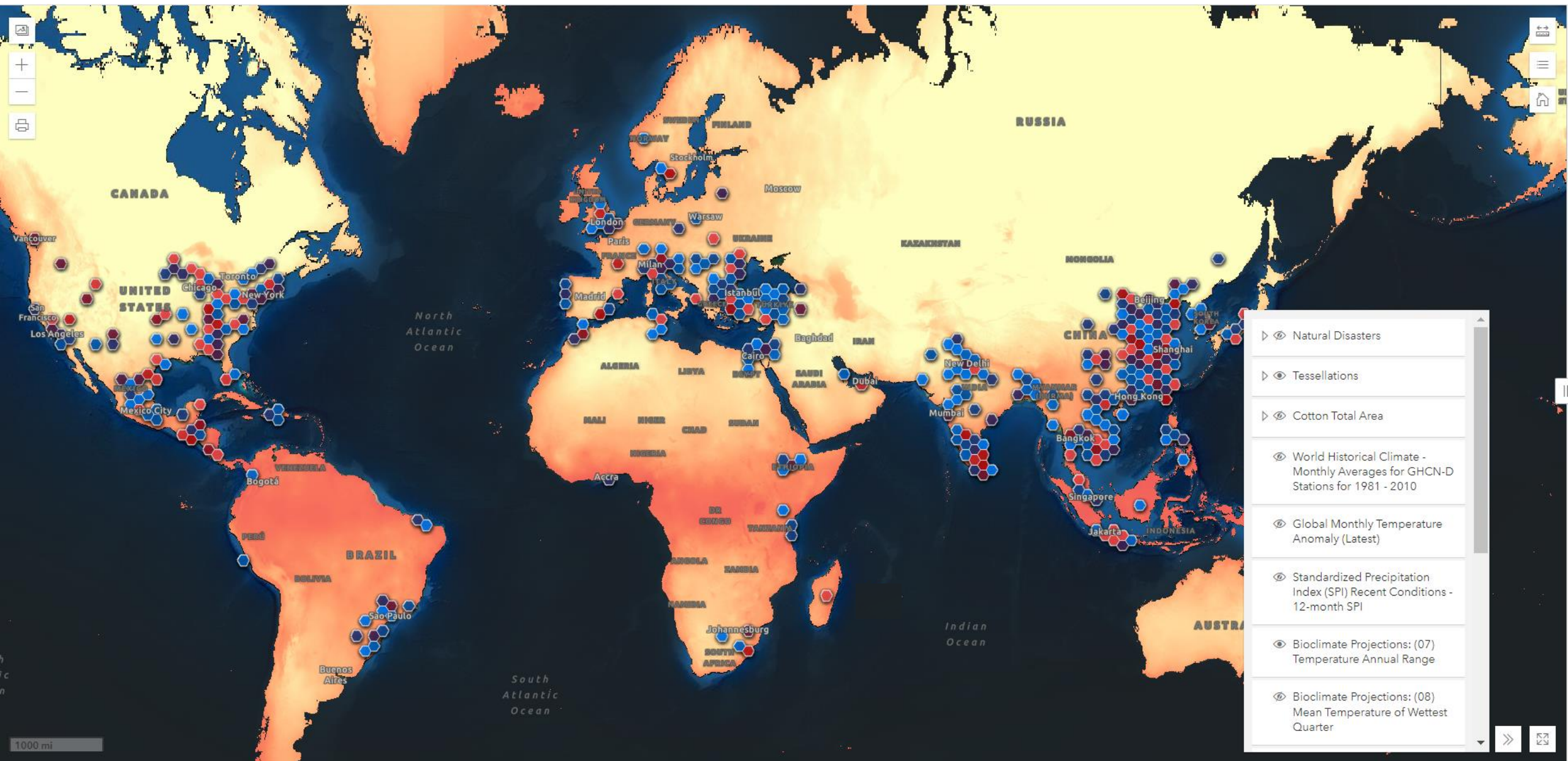
of the global labor force.²

Yet only

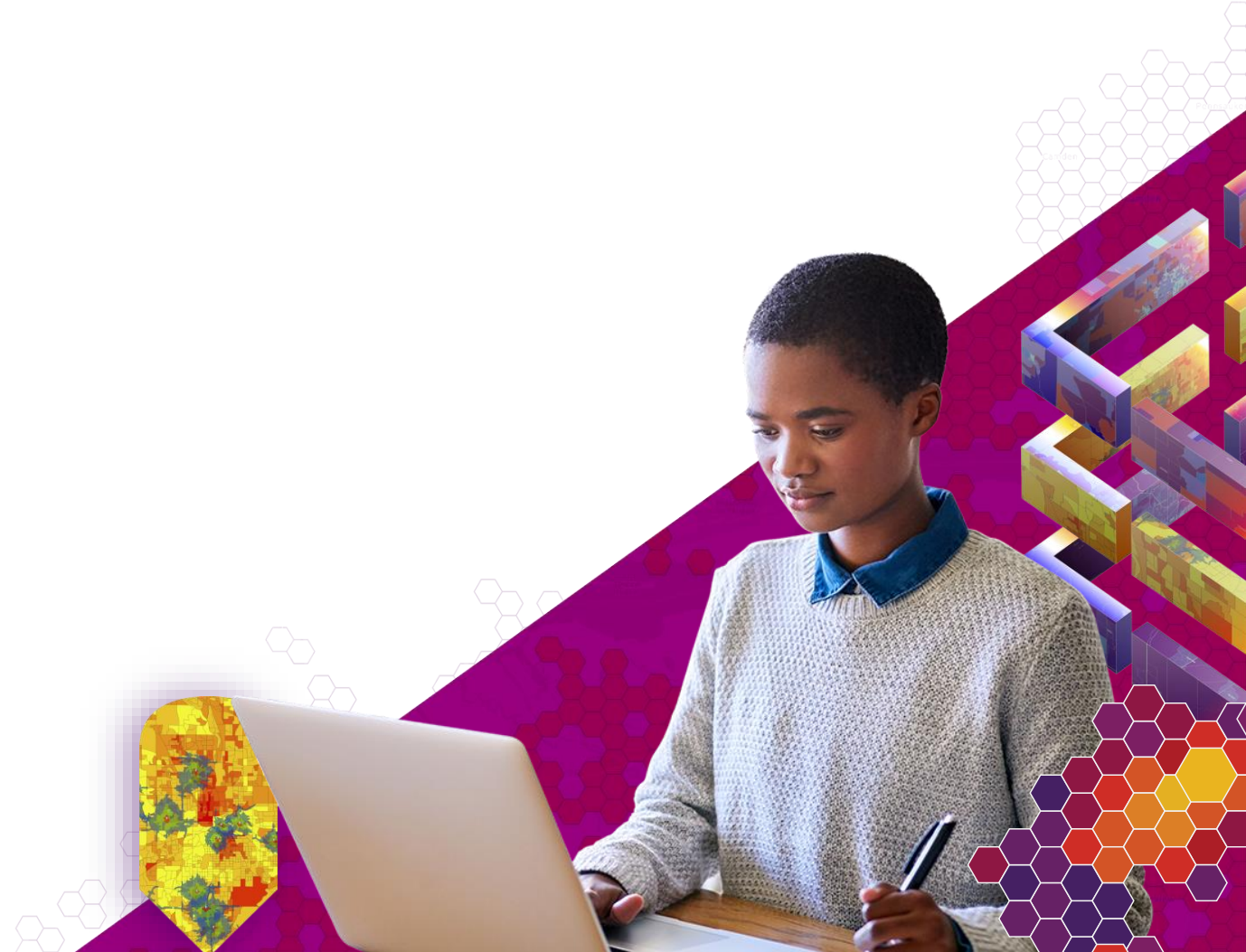
47%

of CEOs globally are investing in green jobs to deliver on the 2030 Agenda and the Paris Agreement.





Some Good News



Making a Difference Award

NESPRESSO

Yann De Pietro
Sustainability Operations
& Digital Manager

The dashboard displays several key metrics and data points:

- IN THE FIELD:** 59,487 (with an upward arrow), 95%, 87%, and 151.25 (with a downward arrow).
- Information:** 18 Countries, 52 Countries, 135,315 Farms.
- Map:** A world map with a focus on South America, showing various colored markers.
- Bottom Bar:** 58,893,846, 4, 9, 0, 90,848.

COFFEE CLASSIFIER

44,412
0.117

A map showing the geographical distribution of coffee plantations, with numerous white and colored markers indicating specific locations.

A field view with green and red markers overlaid on the terrain, likely representing different coffee varieties or health indicators.

An aerial view of a coffee plantation with colorful circular markers (yellow, orange, blue, green) overlaid on the rows of plants. The word "Embu" is visible in the bottom right corner.



Accelerating Supply Chain Sustainability





Breaking Down the Boot

When you think of Timberland® boots, you're thinking of these. Our original waterproof boot was designed more than 40 years ago and remains a best-seller today, with tireless waterproof performance and instantly recognizable work-boot styling.

Here's a view into the parts that bring this iconic boot together.



Legend

Social_Progress_Index_Summary

Count of Points

- 4 - 11
- 3
- 2
- 1
- =0

C500 Shoe Supply Chain CE Test - C500 Shoe Supply Chain CE Test

-

SC Connections2

-

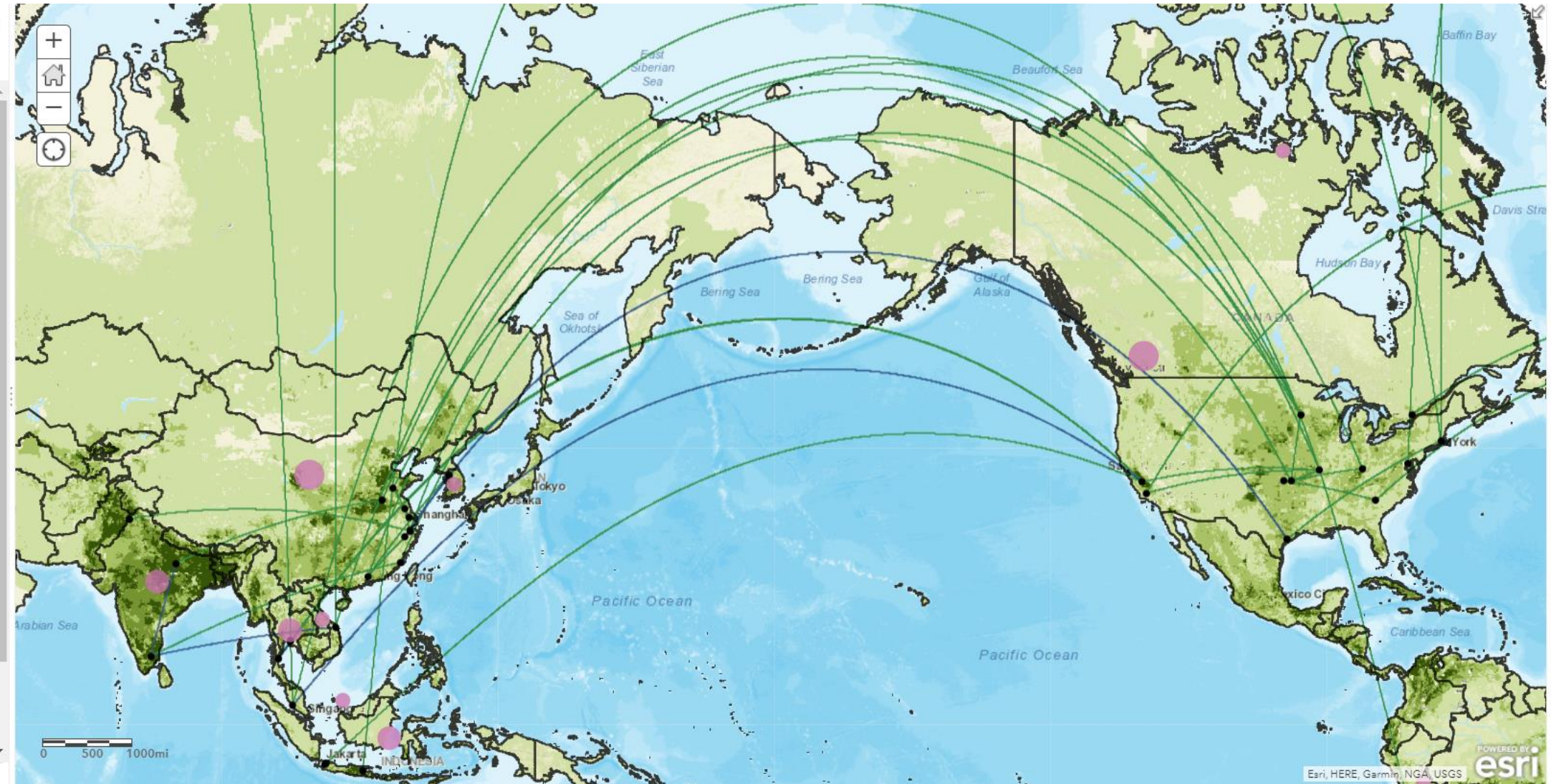
SC Connections

-

2010 Gridded Livestock of the World (GLW3) - Cattle

- 5,000 - 328,070.882
- 2,500 - 5,000
- 500 - 2,500

[Trust Center](#) [Contact Esri](#) [Report Abuse](#)





Running Towards the Future We Imagine

Collective Action

Businesses

- Reveal the supply network
 - Map Suppliers
 - Connect Dependencies
 - Reduce Impact
 - Mitigate and Regenerate
- Build Workforce

Academia

- Partner with Industry
- Build Learning Paths

Policy Makers

- Establish Standards
- Foster Compliance
- Ensure Equity

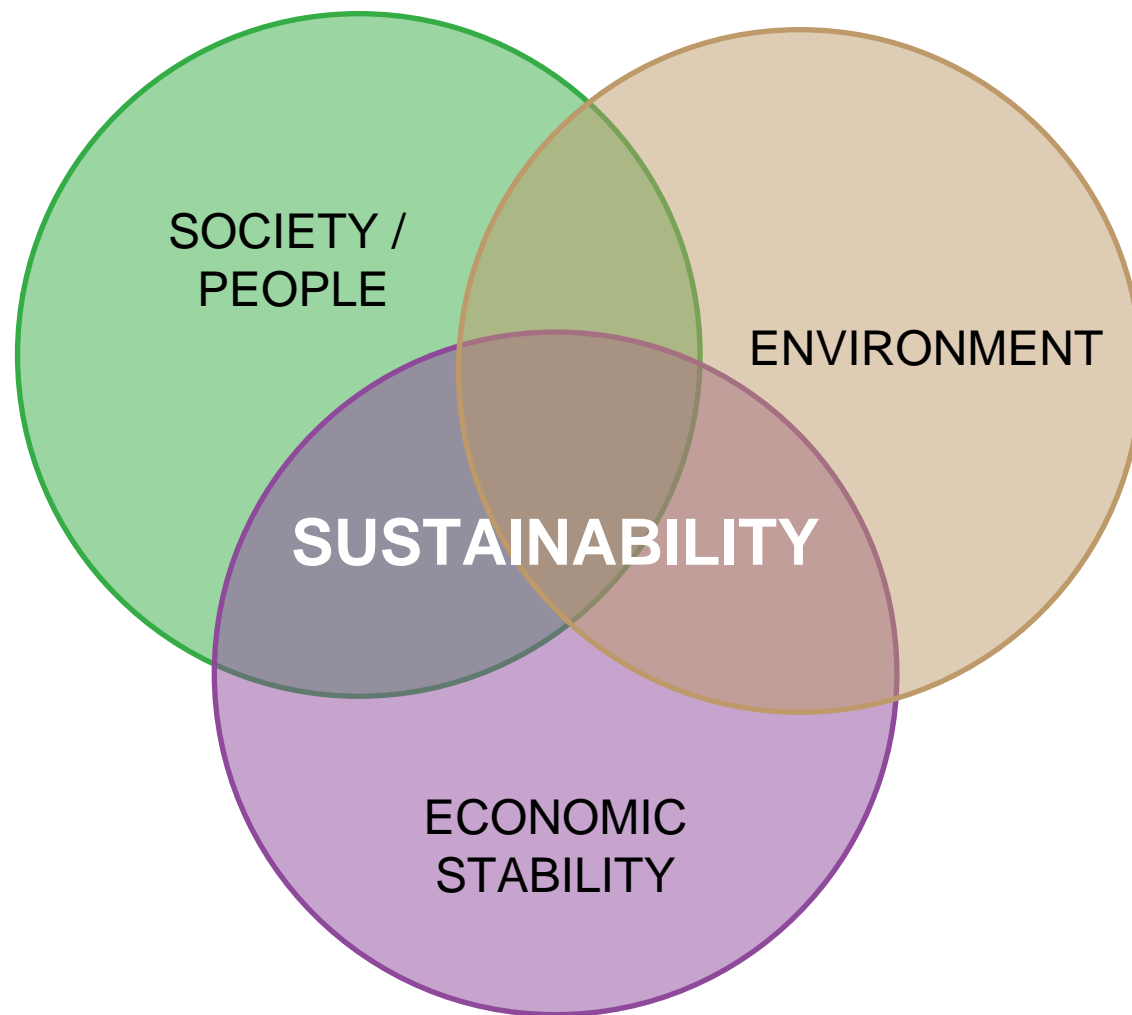
Buyers – B2B and B2C

- Demand Transparency
- Insist on Equity





The **S-E-E Model** of Sustainability reflects the notion that the world is an **interconnected system of social, economic and environmental** needs that must succeed collectively over time.





esri

THE
SCIENCE
OF
WHERE

THE WHITE HOUSE



SEPTEMBER 08, 2022

FACT SHEET: Biden-Harris Administration Launches New Climate Portal to Help Communities Navigate Climate Change Impacts



BRIEFING ROOM

STATEMENTS AND RELEASES

ment Tool

Hazard Information

Federal Policies

Open Data

Climate Mapping for Resilience and Adaptation



<https://resilience.climate.gov/>