



Conferences & Retreats

at University of Redlands, Marin Campus



Making everything perfect.

Thank you for considering the University of Redlands for your conference, meeting, or retreat. Home to graduate programs in theology, education, and business, the Marin campus provides access to educational, professional, cultural, and recreational opportunities on an exceptionally beautiful site. Located just 20 minutes north of the Golden Gate Bridge, our magical campus features amazing views and backdrops of Mount Tamalpais, Bald Hill, and our iconic castles.

Rooted in the San Francisco Bay Area, our stunning San Anselmo venue is a hidden gem. This inspired setting provides an alternative to the traditional hotel or banquet facility.

With attention to detail and personalized service, our team is committed to making every moment of your conference special. From meetings to dinners and retreats, our experienced event professionals will help bring your conference vision to life. Allow us to show you why the University of Redlands, Marin Campus is an ideal choice for your special event. Our largest indoor and outdoor settings can accommodate up to 170 people.

Our preferred Bay Area caterers provide extraordinary value and service, and each creates customized menus sure to please your guests.

Our talented team members are eager to assist you every step of the way. Please visit us for a tour and discover all the ways the campus and our amenities will make your event special and productive. Call or email us to schedule an appointment today.

Happy planning,
University of Redlands Event Services, Marin Campus

Destinations

- 3 Alexander Hall
 - 5 Geneva Terrace
 - 7 Geneva Hall
 - 8 Lloyd-Dobbins Hall
 - 9 Scott Hall
 - 10 Stewart Chapel
 - 11 Montgomery Chapel
 - 12 Montague Hall
 - 14 Shaw Guest House
 - 15 Susanna Baird Hall
 - 16 Trinity House
and Retreat Center
 - 17 Campus Map
 - 18 Terms and Conditions
- Back Tours and Inquiries

Tours and Inquiries

415-451-2843
marin-events@redlands.edu

105 Seminary Road
San Anselmo, CA 94960
www.redlands.edu/marin-events

- Meeting venue rates are for conferences and retreats and includes nine hours of use
- Retreat and lodging units require a two-night minimum stay
- University of Redlands, Marin Campus is proud to partner with preferred Bay Area caterers, beverage providers, local cafes, and restaurants. Please see our preferred vendors list.



Alexander Hall

A versatile venue with 15-foot ceilings and a beautiful oversized fireplace, Alexander Hall overlooks the shaded Redwood Terrace and offers a panoramic view through a wall of windows. Perfect for meetings, retreats, conferences, and product launches.

Features

- 2,000-square-foot indoor venue space
- Limited number of stacked tables and banquet chairs included in rental fee
- Grass area for team building activities and lawn games
- Shaded patio area for outdoor dining and breakouts
- Additional venue space may be available on second floor for an additional fee

Capacity

- Maximum 150 guests with theatre setup
 - Maximum 130 guests with round tables
 - Maximum 100 guests classroom style
-



CALL GODLEY



JIM VETTER



UNKNOWN



UNKNOWN



ASHLEY POGUE



Geneva Terrace

Geneva Terrace offers an amazing backdrop for your event with breathtaking views of Mount Tamalpais, Bald Hill, and our iconic castles. This large outdoor venue is a stunning location for early-morning reflection or yoga at the labyrinth site, outdoor meals, or receptions after your all-day conference or retreat.

Features

- Outdoor venue with a walking labyrinth for personal reflection or group activity
- Beautiful archways and architecture
- Serene atmosphere and dramatic vistas

Capacity

- Maximum 170 guests seated for dinner or standing reception
- Maximum 170 guests with theatre setup

Music

- Music must end by 9:30 p.m. on Friday and Saturday and at 9 p.m. Sunday through Thursday
 - DJs and acoustic bands only with strict sound requirements
-



EMILY AND THOMAS GANNEY



ASHLEY POGUE



EMILY AND THOMAS GANNEY



LARRY PICKARD



EMILY AND THOMAS GANNEY



Geneva Hall

Geneva Hall Room 100 is a beautiful space with modular desks and comfortable furnishings. Filled with natural sunlight, three walls of windows frame views of the redwoods, Mount Tamalpais, and our iconic castles.

Features

- Indoor venue with modular furnishings
- Wi-Fi
- Three walls of windows for ample sunlight
- Classroom setup
- 30 wheeled chairs, 14 tables, dry-erase board, and a projection screen

Capacity

- Maximum 60 guests

Geneva Hall Room 115 (not pictured) is a comfortable room perfect for small meetings, classes, or counseling sessions. Geneva Hall is set atop Seminary Hill, and this room is close to communal outdoor space and one of our labyrinths on Geneva Terrace.

Features

- Indoor venue with large-screen TV, chalkboard, and whiteboard
- Tables and chairs setup
- Access to communal outdoor space and nearby labyrinth

Capacity

- Maximum 20 guests

Lloyd-Dobbins Hall

Lloyd Classroom at Lloyd-Dobbins Hall accommodates a variety of setups and features a drop-down screen. It is adjacent to a very peaceful park-like setting and has access to one of our labyrinths. This venue has a separate entrance and is shared with the Interfaith Counseling Center.

Features

- Indoor venue with classroom setup
- Limited number of tables and chairs included in rental fee
- Drop-down screen

Capacity

Maximum 80 guests



ASHLEY POGUE



STEVE CARROLL



Scott Hall

Located in one of the historic castles on campus, Scott Hall, Room 101 is a beautiful circular classroom providing plenty of natural light. This classroom is perfect for conferences and meetings.

Features

- Indoor venue
- Limited number of classroom tables and chairs, setup as is
- Drop-down screen
- Wi-Fi
- Phone line
- Outdoor picnic tables
- Four additional smaller classrooms can be rented as breakout rooms or for meals

Capacity

- Maximum 65 guests seated in a combined classroom/theatre setup
-

Stewart Chapel

Adjacent to Geneva Terrace and overlooking the Ross Valley and majestic Mount Tamalpais, this spectacular, traditional cathedral is a hidden gem nestled in the hills of San Anselmo. The chapel is ideal for lectures and keynotes.

Features

- Historic stone architecture
- Stained-glass windows
- Traditional, regal atmosphere
- Beautiful hilltop views
- Indoor venue
- Grand piano
- Microphones and speakers may be used with pre-approval of preferred licensed audio-visual vendors

Capacity

- Maximum 170 guests





Montgomery Chapel

Built in 1892, this unique and enchanting chapel is an ideal setting for intimate gatherings, retreats, and lectures. With its graceful rotunda and intricate stained-glass windows, it is reminiscent of a precious jewel box.

Features

- Historic stone architecture
- Stained-glass windows
- Indoor venue with intimate atmosphere
- Lush surrounding gardens and picturesque breezeway
- Excellent acoustics and grand piano

Capacity

- Maximum 90 guests
-

Montague Hall

Montague Hall is adjacent to our beautiful Montgomery Chapel and is perfect for small receptions, seated meals or meetings, and small retreats. The venue has an oversized fireplace, stained-glass windows, and a lovely outdoor breezeway and patio.

Features

- Historic stone architecture
- Indoor venue with outdoor space
- Limited number of tables and chairs included in rental fee
- Prep kitchen area

Capacity

- Maximum 30 guests seated
 - Maximum 60 guests for standing reception
-





STEVE CARROLL

Staying Overnight

Our campus offers unique lodging and retreat centers for weddings, receptions, and conferences, as well as Airbnb apartments to rent. Just a short stroll to the quaint downtown area of San Anselmo, the town has literally grown up around University of Redlands, Marin Campus, emerging as an antique-shopping capital with cafes, restaurants, galleries, and shops.

The University also boasts close proximity to one of Northern California's most popular biking corridors, making San Anselmo and the neighboring towns very friendly to those traveling on two wheels. With unobstructed views of majestic Mount Tamalpais from campus, visitors will find solace and inspiration in surrounding parklands, nearby hiking trails, and on campus. San Francisco is only a 30-minute drive and 20 minutes to the Golden Gate Bridge.

Shaw Guest House

This gracious, two-story Victorian house has a spacious eat-in kitchen for cooking meals with family and friends. The living room opens to a large formal dining room creating the perfect space to gather, and an expansive front porch for socializing.

Features

- Six large bedrooms
- Three full baths
- Fully equipped, eat-in, gourmet kitchen with six-burner Viking range and large center island
- Comfortable living room with an oversized, working fireplace
- Large, formal dining room
- Wi-Fi and basic cable
- Large covered porch for extra seating
- Check-in is at 3 p.m., and check-out is at 10 a.m.

Capacity

- Sleeps up to 14 guests
- Maximum 30 guests for a standing reception or smaller gatherings for meals

Strict Sound Requirements

- Quiet hours are from 9:30 p.m. to 8 a.m.





Susanna Baird Hall

Located just 20 minutes north of the Golden Gate Bridge and surrounded by California redwoods, Susanna Baird Hall is also in close proximity to beautiful downtown San Anselmo and nearby Marin hiking trails. It is the perfect location for a retreat or housing out-of-town guests.

Features

- Two-level, mid-century indoor venue
- 28 double-occupancy sleeping rooms, each furnished with two twin beds, desk, air conditioning/heating unit and wired internet
- A fully equipped communal kitchen
- Dining hall seats 40 guests
- Lounge area with a smart TV and whiteboard
- Located on each floor: private showers and separate men's and women's restrooms. Guests will need to provide their own toiletries
- Labyrinth adjacent to hall

Capacity

- Maximum 52 guests
 - shared dorm rooms
 - two twin beds per room
-

Trinity House and Retreat Center

Trinity House and Retreat Center is a two-story, 5,000-square-foot home in the campus' residential area. Built in 1905, the house is a perfect venue for standing receptions or seated dinners. The house sits next to Alexander Hall and is within walking distance of many Marin Campus venues and downtown shops and dining.

Features

- Indoor venue
- Eight large bedrooms
- Four full baths and two half-baths
- Oversized living room, den with fireplace, and large dining room area
- Main areas accommodate up to 50 people for a rehearsal dinner or standing reception
- Fully equipped kitchen has two large refrigerators and one freezer and supports meal preparation for large groups
- Wi-Fi and basic cable
- Check-in is at 3 p.m., and check-out is at 10 a.m.

Capacity

- Sleeps up to 22 guests in shared rooms
- Maximum 50 guests for a dinner or reception

Strict Sound Requirements

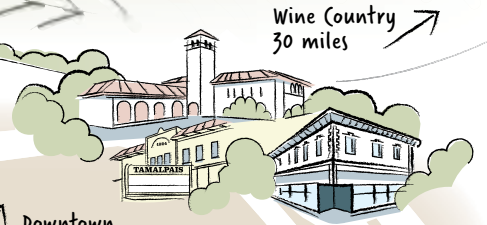
- Quiet hours are from 9:30 p.m. to 8 a.m.



University of Redlands, Marin Campus – San Anselmo, California

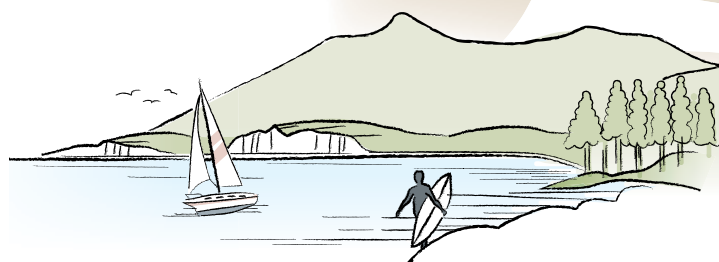
1. **Montgomery Hall:** Faculty, staff, and administration
2. **Scott Hall:** Classrooms, student lounge, and meeting/event venue
3. **Geneva Hall and Terrace:** Library and event venue
4. **Stewart Chapel**
5. **Alexander Hall:** Meeting/event venue, cafeteria, and Holy Grounds Student Coffee House
6. **Trinity House and Retreat Center:** Lodging and Airbnb rental
7. **Student Village:** Student housing
8. **Playhouse:** Performance space
9. **Suzanna Baird Hall:** Retreat center, lodging, and Airbnb rental
10. **Lloyd-Dobbins Hall:** Interfaith Counseling Center and Lloyd Classroom
11. **First Presbyterian Church, San Anselmo**
12. **Oxtoby Hall:** Student housing
13. **Landon Hall:** Student housing and Airbnb rental
14. **Hunter Hall:** Student housing and Airbnb rental
15. **Montague Hall:** Meeting/event venue
16. **Montgomery Chapel**
17. **Shaw Guest House:** Lodging and Airbnb rental
18. **Cedars Fine Art Studios:** Independent nonprofit

P Parking
R Residence
L Labyrinth



Downtown San Anselmo
4 blocks

Berkeley, Graduate Theological Union (GTU) & San Francisco
15 miles



Mount Tamalpais, Muir Woods,
Stinson Beach & Point Reyes 10 miles

Main University of Redlands
Campus 458 miles

Mill Valley & Sausalito
10 miles

Terms and Conditions

Liability insurance

The University of Redlands requires all non-University sponsored events to carry comprehensive general liability insurance.

A certificate of liability insurance should be issued by the carrier in the amount of \$1 million for each occurrence and \$2 million for general aggregate, and must be received by Event Services no later than 90 days prior to your scheduled event.

Deposit and payment procedures

A 50 percent deposit and signed contract will be required to reserve University facilities. Final payment of facility fees must be received 90 days prior to the event date.

Rentals

Any rentals used on campus must be approved through Event Services. All vendors on University property are required to carry specific liability insurance required by the University.

Cancellations

All fees and deposits are nonrefundable once deposited.

Publications

Event Services must approve any printed materials or advertising using the University of Redlands name or logo prior to publication.

University of Redlands is a private, nonprofit university that connects students to a world of opportunity geared toward their passions and potential. While the seminary grounds are 150 years old, the University of Redlands, Marin Campus was created in 2019 as a result of a merger between the San Francisco Theological Seminary and the University of Redlands. Building on our combined 250-plus years of history, we are committed to educating students, advancing scholarship, and celebrating service.



STEVE CARROLL

Tours and Inquiries

415-451-2843
marin-events@redlands.edu

105 Seminary Road
San Anselmo, CA 94960
www.redlands.edu/marin-events

R UNIVERSITY OF
Redlands
MARIN CAMPUS