



Special Events

at University of Redlands, Marin Campus



Making everything perfect.

Thank you for considering the University of Redlands for your special event. Home to graduate programs in theology, education, and business, the Marin campus provides access to educational, professional, cultural, and recreational opportunities on an exceptionally beautiful site. Located just 20 minutes north of the Golden Gate Bridge, our magical campus features amazing views and backdrops of Mount Tamalpais, Bald Hill, and our iconic castles.

Rooted in the San Francisco Bay Area, our stunning San Anselmo venue is a hidden gem. This inspired setting provides an alternative to the traditional hotel or banquet facility.

With attention to detail and personalized service, our team is committed to making every moment of your event special. From dinners to celebrations and weddings, our experienced event service professionals will help bring your vision to life. Allow us to show you why the University of Redlands, Marin Campus is an ideal choice for your special event.

Our preferred Bay Area caterers provide extraordinary value and service, and each creates customized menus sure to please your guests.

Our talented team members are eager to assist you every step of the way. Please visit us for a tour and discover all the ways the campus and our amenities will make your event special and memorable. Call or email us to schedule an appointment today.

Happy planning,
University of Redlands Event Services, Marin Campus

Destinations

- 3 Geneva Terrace
 - 5 Alexander Hall
 - 6 Stewart Chapel
 - 7 Montgomery Chapel
 - 8 Montague Hall
 - 10 Shaw Guest House
 - 11 Susanna Baird Hall
 - 12 Trinity House and Retreat Center
 - 13 Campus Map
 - 14 Terms and Conditions
- Back Tours and Inquiries

Tours and Inquiries

415-451-2843
marin-events@redlands.edu

105 Seminary Road
San Anselmo, CA 94960
www.redlands.edu/marin-events

- Event rates are for special events and weddings
- Retreat and lodging units require a two-night minimum stay
- University of Redlands, Marin Campus is proud to partner with preferred Bay Area full-service caterers and beverage providers. Please see our preferred vendors list.



Geneva Terrace

Geneva Terrace offers an amazing backdrop for your special occasion with breathtaking views of Mount Tamalpais, Bald Hill, and our iconic castles. The large outdoor venue is a stunning location for ceremonies, weddings, dinners, receptions, bar and bat mitzvahs, birthday parties, reunions, and other special events.

Features

- Outdoor venue with a labyrinth
- Beautiful archways and architecture
- Serene atmosphere and dramatic vistas
- Two dressing rooms available

Music

- Music must end by 9:30 p.m. on Friday and Saturday and at 9 p.m. Sunday through Thursday
- DJs and acoustic bands only with strict sound requirements

Capacity

- Maximum 170 guests for seated dinner or standing reception
 - Maximum 170 guests for wedding ceremony, reception, and seated dinner with additional setup/breakdown requirements
 - Maximum 130 guests for ceremony, reception, and seated dinner without additional setup/breakdown requirements
-



EMILY AND THOMAS GANNEY



CNS GEDDI RDT



EMILY AND THOMAS GANNEY



LAUREN PEDERSEN



EMILY AND THOMAS GANNEY



Alexander Hall

Alexander Hall is a versatile venue with 15-foot ceilings and a beautiful oversized fireplace. Overlooking the shaded Redwood Terrace this space offers a panoramic view through a wall of windows. Perfect for receptions, dinners, weddings, reunions, birthday parties, bar and bat mitzvahs, wine tastings, and other special events.

Features

- 2,000-square-foot indoor venue space
- Grass area for ceremonies, receptions, or lawn games
- Limited number of round tables, banquet chairs, and cocktail tables included
- Parquet floors
- Caterer prep area

Capacity

- Maximum 130 guests at round tables with dance floor
- Maximum 200-guest standing reception

Music

- Music must end by 10 p.m. on Friday and Saturday and at 9 p.m. Sunday through Thursday
 - DJs and acoustic bands only with strict sound requirements
-

Stewart Chapel

Stewart Chapel is a spectacular, traditional cathedral and a hidden gem nestled in the hills of San Anselmo. It's the perfect location to host wedding ceremonies, concerts, church services, and graduations. The chapel pairs nicely as a wedding ceremony location with either the adjacent Geneva Terrace or Alexander Hall.

Features

- Historic stone architecture
 - Stained-glass windows
 - Traditional, regal atmosphere
 - Beautiful hilltop views
 - Indoor venue
 - Grand piano and sound system
 - Microphones and speakers may be used with pre-approval of preferred licensed audio-visual vendors
 - Two dressing rooms available
-

Capacity

- Maximum 170 guests seated and 30 standing (200 total)





Montgomery Chapel

Built in 1892, this unique and enchanting chapel is an ideal setting for intimate ceremonies, graduations, church services, bar and bat mitzvahs, and small concerts. The chapel has a graceful rotunda and intricate stained-glass windows, reminiscent of a precious jewel box.

Features

- Historic stone architecture
- Stained-glass windows
- Lush surrounding gardens and picturesque breezeway
- Intimate atmosphere
- Indoor venue
- Excellent acoustics and grand piano

Capacity

- Maximum 90 guests

Montague Hall

Montague Hall is adjacent to our beautiful Montgomery Chapel and is perfect for small receptions and seated meals. The venue has an oversized fireplace, stained-glass windows, and a lovely outdoor breezeway and patio.

Features

- Historic stone architecture
- Indoor venue with outdoor space
- Limited number of tables and chairs included in rental fee
- Prep kitchen area
- Piano and TV for presentations

Capacity

- Maximum 30 guests seated
- Maximum 60 guests for standing reception





Staying Overnight

Our campus offers unique lodging and retreat centers for weddings, receptions, and conferences, as well as Airbnb apartments to rent. Just a short stroll to the quaint downtown area of San Anselmo, the town has literally grown up around University of Redlands, Marin Campus, emerging as an antique-shopping capital with cafes, restaurants, galleries, and shops.

The University also boasts close proximity to one of Northern California's most popular biking corridors, making San Anselmo and the neighboring towns very friendly to those traveling on two wheels. With unobstructed views of majestic Mount Tamalpais from campus, visitors will find solace and inspiration in surrounding parklands, nearby hiking trails, and on campus. San Francisco is only a 30-minute drive and 20 minutes to the Golden Gate Bridge.

Shaw Guest House

This gracious, two-story Victorian house has a spacious eat-in kitchen for cooking meals with family and friends. The living room opens to a large formal dining room creating the perfect space to gather, and an expansive front porch for socializing.

Features

- Indoor venue
- Six large bedrooms
- Three full baths
- Fully equipped, eat-in, gourmet kitchen with six-burner Viking range and large center island
- Comfortable living room with an oversized, working fireplace
- Large, formal dining room
- Wi-Fi and basic cable
- Large covered porch for extra seating
- Check-in is at 3 p.m., and check-out is at 10 a.m.

Capacity

- Sleeps up to 14 guests
- Maximum 30 guests for a standing reception or smaller gatherings for meals

Strict Sound Requirements

- Quiet hours are from 9:30 p.m. to 8 a.m.



EMILY AND THOMAS GANEV



Susanna Baird Hall

Located just 20 minutes north of the Golden Gate Bridge and surrounded by California redwoods, Susanna Baird Hall is also in close proximity to beautiful downtown San Anselmo and nearby Marin hiking trails. It is the perfect location for a retreat or housing out-of-town guests.

Features

- Two-level, mid-century indoor venue
- 28 double-occupancy sleeping rooms, each furnished with two twin beds, desk, air conditioning/heating unit and wired internet
- A fully equipped communal kitchen
- Dining hall seats 40 guests
- Lounge area with a smart TV and whiteboard
- Located on each floor:
private showers and separate men's and women's restrooms.
Guests will need to provide their own toiletries
- Labyrinth adjacent to hall

Capacity

- Maximum 52 guests
 - shared dorm rooms
 - two twin beds per room

Trinity House and Retreat Center

Trinity House and Retreat Center is a two-story, 5,000-square-foot home in the campus' residential area. Built in 1905, the house is a perfect venue for standing receptions or seated dinners. The house sits next to Alexander Hall and is within walking distance of many Marin Campus venues and downtown shops and dining.

Features

- Indoor venue
- Eight large bedrooms
- Four full baths and two half-baths
- Oversized living room, den with fireplace, and large dining room area
- Main areas accommodate up to 50 people for a rehearsal dinner or standing reception
- Fully equipped kitchen has two large refrigerators and one freezer and supports meal preparation for large groups
- Wi-Fi and basic cable
- Check-in is at 3 p.m., and check-out is at 10 a.m.

Capacity

- Sleeps up to 22 guests in shared rooms
- Maximum 50 guests for a dinner or reception

Strict Sound Requirements

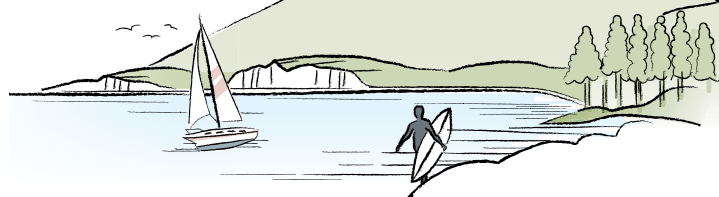
- Quiet hours are from 9:30 p.m. to 8 a.m.



University of Redlands, Marin Campus – San Anselmo, California

1. **Montgomery Hall:** Faculty, staff, and administration
2. **Scott Hall:** Classrooms, student lounge, and meeting/event venue
3. **Geneva Hall and Terrace:** Library and event venue
4. **Stewart Chapel**
5. **Alexander Hall:** Meeting/event venue, cafeteria, and Holy Grounds Student Coffee House
6. **Trinity House and Retreat Center:** Lodging and Airbnb rental
7. **Student Village:** Student housing
8. **Playhouse:** Performance space
9. **Suzanna Baird Hall:** Retreat center, lodging, and Airbnb rental
10. **Lloyd-Dobbins Hall:** Interfaith Counseling Center and Lloyd Classroom
11. **First Presbyterian Church, San Anselmo**
12. **Oxtoby Hall:** Student housing
13. **Landon Hall:** Student housing and Airbnb rental
14. **Hunter Hall:** Student housing and Airbnb rental
15. **Montague Hall:** Meeting/event venue
16. **Montgomery Chapel**
17. **Shaw Guest House:** Lodging and Airbnb rental
18. **Cedars Fine Art Studios:** Independent nonprofit

P Parking
R Residence
L Labyrinth



Mount Tamalpais, Muir Woods,
Stinson Beach & Point Reyes 10 miles

**Main
University of Redlands
Campus 458 miles**

Mill Valley
& Sausalito
10 miles

Terms and Conditions

Liability insurance

The University of Redlands requires all non-University sponsored events to carry comprehensive general liability insurance.

A certificate of liability insurance should be issued by the carrier in the amount of \$1 million for each occurrence and \$2 million for general aggregate, and must be received by Event Services no later than 90 days prior to your scheduled event.

Deposit and payment procedures

A 50 percent deposit and signed contract will be required to reserve University facilities. Final payment of facility fees must be received 90 days prior to the event date.

Rentals

Any rentals used on campus must be approved through Event Services. All vendors on University property are required to carry specific liability insurance required by the University.

Cancellations

All fees and deposits are nonrefundable once deposited.

Publications

Event Services must approve any printed materials or advertising using the University of Redlands name or logo prior to publication.

University of Redlands is a private, nonprofit university that connects students to a world of opportunity geared toward their passions and potential. While the seminary grounds are 150 years old, the University of Redlands, Marin Campus was created in 2019 as a result of a merger between the San Francisco Theological Seminary and the University of Redlands. Building on our combined 250-plus years of history, we are committed to educating students, advancing scholarship, and celebrating service.



STEVE CARROLL

Tours and Inquiries

415-451-2843
marin-events@redlands.edu

105 Seminary Road
San Anselmo, CA 94960
www.redlands.edu/marin-events

R UNIVERSITY OF
Redlands
MARIN CAMPUS